



®

40LM - PRODUCT DATA DIGEST

CHILLED WATER FAN-COIL UNITS



QUALITY SYSTEM



MALAYSIA
MS ISO 9001
REG. NO: AR 0239

Any room, every room flexibility in an air conditioning system

FEATURES:

- Chilled Water Furred-in model with Plenum Fan Coil units.
- The low silhouette styling of this unit makes it a popular choice for “in-the-ceiling” or “over the closet” applications in all types of building.
- Horizontal ducted application.
- Insulated & painted condensate drain pan and a factory fitted frame complete with filter media.
- Installed with direct driven forward curved centrifugal fans and 3 speed motor ensures quiet operation.
- Standard copper tube aluminium fins (Cu/Al) evaporator coil for maximum heat transfer.
- Carrier Lanced Sine Wave fin pattern ensures energy efficient performance.
- Units shall be manufactured as left-hand side (in the direction of air flow) piping connection as standard.

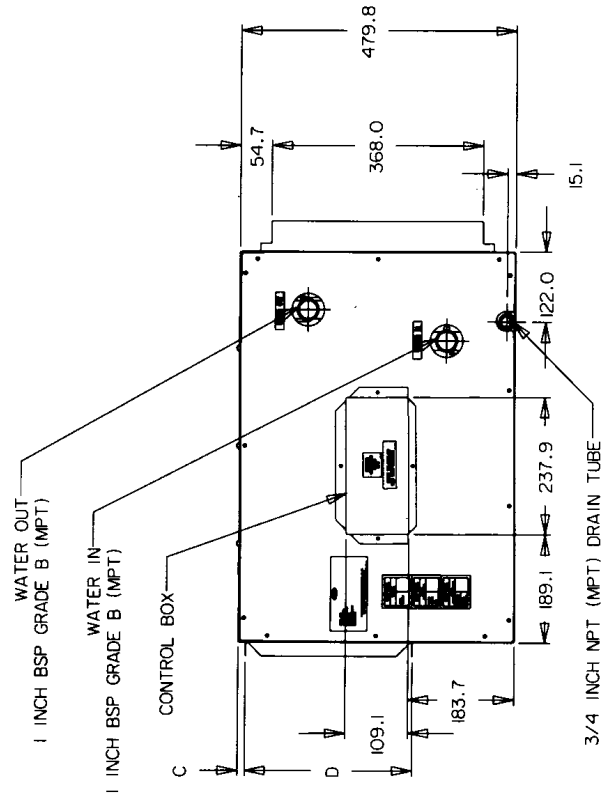
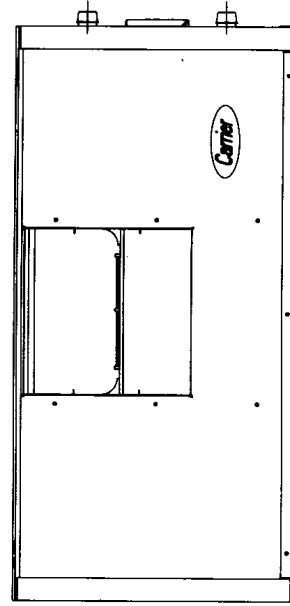
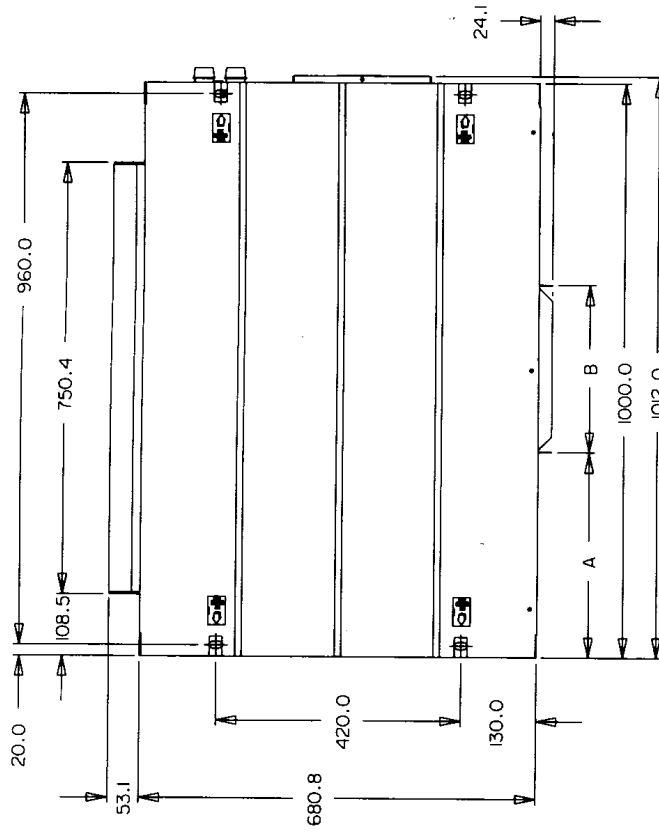
SPECIFICATIONS

TYPE		CHILLED WATER FAN COIL					
MODEL		40LM040	40LM050	40LM060	40LM070	40LM090	40LM100
NOMINAL CAPACITY	kW	11.6	14.2	18.4	21.6	29.1	30.6
	Btu/hr	39 580	48 450	62 780	73 700	99 290	104 400
AIR QUANTITY	Range (l/s)	420 ~ 660	480 ~ 640	550 ~ 750	650 ~ 1050	550 ~ 1100	1000 ~ 1500
POWER SUPPLY	V/Ph/Hz	230/1/50					
FAN	Type	CENTRIFUGAL FORWARD CURVED BLADES					
	Drive	DIRECT DRIVE					
	Quantity	1			2		
	Max rpm	2400	2400	2100	2400	2100	2100
	Diameter (mm)	225	225	271	225	271	271
FAN MOTOR	Type	PERMANENT SPLIT CAPACITOR , 3 SPEEDS					
	Quantity	1					
	kW	0.57	0.55	0.82	0.90	1.43	1.47
	FLA	3.0	3.0	4.2	5.5	8.6	8.6
	RPM	1280	1280	1155	1375	1320	1320
COIL	Type	COPPER TUBES, ALUMINIUM PLATE FINs					
	Row - Fins/in	2 - 15	3 - 15	4 - 15	3 - 15	4 - 15	3 - 15
	Face area (sq.m)	0.343	0.343	0.343	0.437	0.437	0.613
FILTER	Type	WASHABLE / THROWAWAY					
	Size (HxWxD) mm	398 x 744 x 12	398 x 744 x 12	398 x 744 x 12	398 x 944 x 12	398 x 944 x 12	398 x 1344 x 12
	Quantity	1					
CONNECTIONS	Supply	1" BSP MPT					
	Return	1" BSP MPT					
	Drain	3/4" NPT MPT					
NET WEIGHT	kg	68	70	72	95	100	118
DIMENSIONS	Height (mm)	480					
	Width (mm)	1000			1200		1600
	Depth (mm)	680					

FLA: FULL LOAD AMPS

PHYSICAL DIMENSION

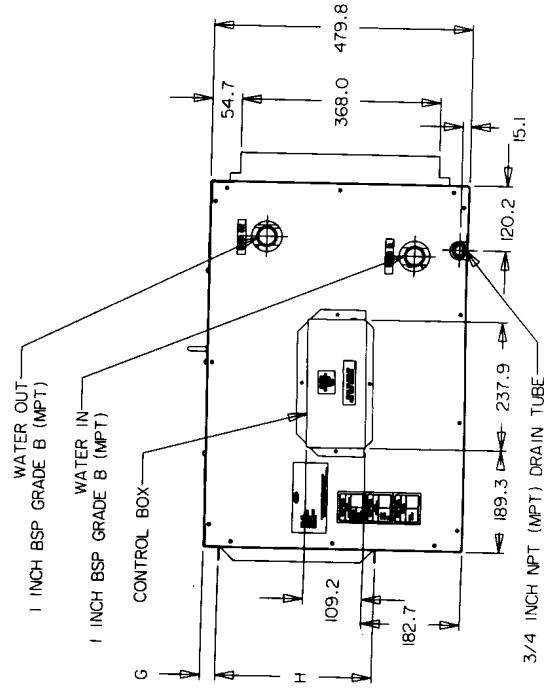
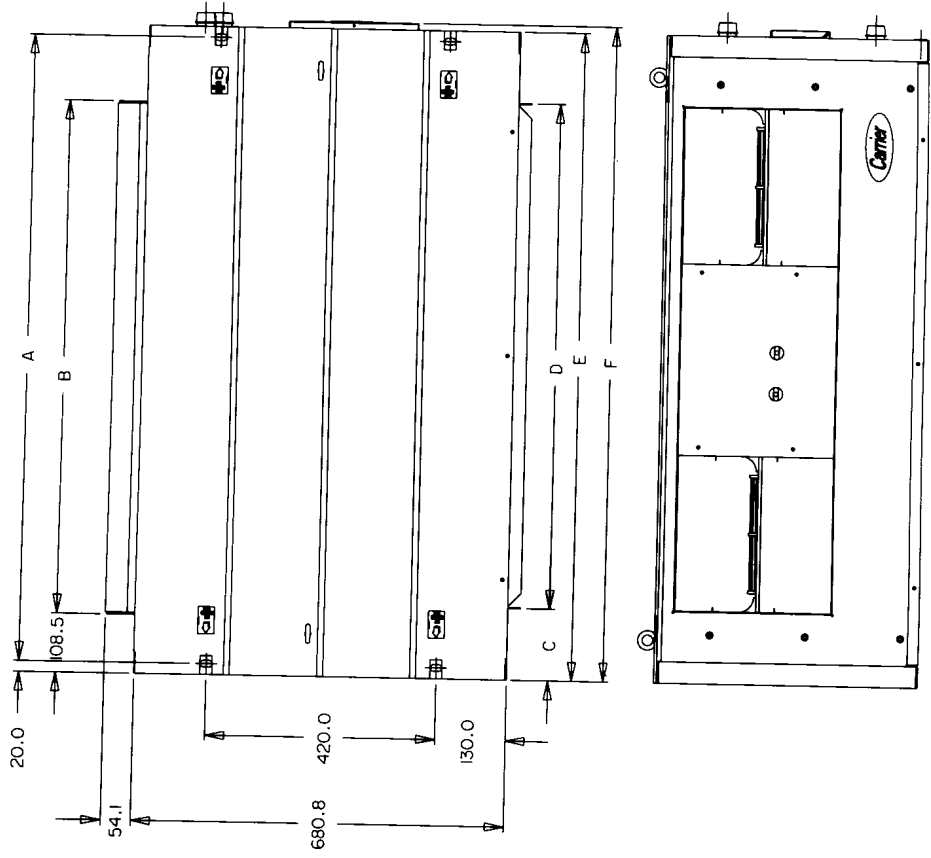
Model Size	A	B	C	D
40LM040/050	357.6	291.2	12.6	291.2
40LM060	335.1	336.2	17.2	336.2



ALL DIMENSION IS IN MM

PHYSICAL DIMENSION

Model No	A	B	C	D	E	F	G	H
40LM070	1160	949	132.4	935.2	1200	1212	28.6	291.2
40LM090	1160	949	132.4	935.2	1200	1212	28.6	335.4
40LM100	1560	1350.4	287.4	1025.2	1600	1610.8	17.6	336.2



ALL DIMENSION IS IN MM

PERFORMANCE DATA COOLING CAPACITIES

MODEL: 40LM040

AIR QUANTITY (l/s)	ENT CHILLED WATER TEMP (°C)	CHILLED WATER FLOW (L/MIN)	ENT AIR TEMP DB/WB (°C)					
			25.0/17.0		27.0/19.5		29.0/22.0	
			TC	SHC	TC	SHC	TC	SHC
420	5	13	6.6	5.9	7.9	6.0	9.4	6.1
		26	7.8	6.5	9.8	6.8	11.9	7.1
		39	8.4	6.8	10.7	7.2	13.1	7.6
	6	13	6.2	5.6	7.4	5.8	8.9	5.9
		26	7.3	6.2	9.2	6.6	11.3	6.9
		39	7.8	6.5	10.0	6.9	12.4	7.3
	7	13	5.8	5.4	7.0	5.6	8.4	5.8
		26	6.7	6.0	8.5	6.3	10.7	6.6
		39	7.2	6.2	9.3	6.6	11.7	7.1
	8	13	5.4	5.2	6.5	5.4	7.9	5.6
		26	6.2	5.7	7.9	6.1	10.0	6.4
		39	6.6	6.0	8.6	6.4	11.0	6.7
	9	13	5.0	5.0	6.1	5.2	7.4	5.4
		26	5.7	5.5	7.3	5.8	9.4	6.1
		39	6.1	5.7	7.9	6.1	10.3	6.5
500	5	13	7.1	6.5	8.4	6.7	10.0	6.8
		26	8.5	7.3	10.6	7.6	12.9	7.9
		39	9.3	7.7	11.7	8.1	14.3	8.5
	6	13	6.7	6.3	8.0	6.5	9.4	6.6
		26	8.0	7.1	9.9	7.4	12.2	7.6
		39	8.6	7.4	10.9	7.8	13.6	8.2
	7	13	6.2	6.1	7.5	6.3	8.9	6.4
		26	7.4	6.8	9.3	7.1	11.5	7.4
		39	8.0	7.1	10.2	7.5	12.8	7.9
	8	13	5.9	5.8	7.0	6.1	8.4	6.2
		26	6.9	6.5	8.6	6.8	10.8	7.1
		39	7.4	6.6	9.5	7.2	12.0	7.6
	9	13	5.5	5.5	6.6	5.8	7.9	6.0
		26	6.3	6.2	7.9	6.6	10.1	6.8
		39	6.7	6.5	8.7	6.9	11.3	7.3
660	5	13	7.9	7.5	9.2	7.7	10.7	7.8
		26	9.7	8.6	11.7	8.9	14.3	9.1
		39	10.5	9.1	13.2	9.5	16.1	9.8
	6	13	7.4	7.3	8.7	7.5	10.2	7.6
		26	9.0	8.3	10.9	8.6	13.5	8.9
		39	9.8	8.7	12.3	9.1	15.2	9.5
	7	13	7.0	7.0	8.2	7.2	9.6	7.4
		26	8.4	8.0	10.3	8.3	12.7	8.5
		39	9.1	8.4	11.6	8.9	14.3	9.2
	8	13	6.6	6.6	7.7	7.0	9.1	7.2
		26	7.8	7.6	9.6	8.0	12.0	8.3
		39	8.4	8.0	10.6	8.5	13.5	8.8
	9	13	6.2	6.2	7.2	6.8	8.6	6.9
		26	7.3	7.3	8.9	7.7	11.1	8.0
		39	7.7	7.6	9.8	8.1	12.6	8.5

TC : TOTAL HEAT CAPACITY (kW)

SHC : SENSIBLE HEAT COOLING CAPACITY (kW)

PERFORMANCE DATA COOLING CAPACITIES

MODEL: 40LM050

AIR QUANTITY (l/s)	ENT CHILLED WATER TEMP (°C)	CHILLED WATER FLOW (L/MIN)	ENT AIR TEMP DB/WB (°C)					
			25.0/17.0		27.0/19.5		29.0/22.0	
			TC	SHC	TC	SHC	TC	SHC
480	5	17	8.5	7.5	10.2	7.7	12.0	7.8
		33	10.4	8.4	12.8	8.8	15.6	9.2
		50	11.2	8.8	14.1	9.4	17.2	9.9
	6	17	8.0	7.2	9.6	7.4	11.4	7.6
		33	9.6	8.1	12.0	8.5	14.8	8.8
		50	10.4	8.4	13.2	8.9	16.3	9.5
	7	17	7.5	7.0	8.9	7.2	10.8	7.3
		33	8.9	7.7	11.3	8.2	13.9	8.5
		50	9.6	8.1	12.3	8.6	15.4	9.1
	8	17	7.0	6.7	8.4	6.9	10.2	7.1
		33	8.2	7.4	10.4	7.8	13.1	8.2
		50	8.8	7.7	11.4	8.2	14.4	8.8
	9	17	6.5	6.4	7.8	6.7	9.6	6.8
		33	7.6	7.1	9.7	7.6	12.2	7.9
		50	8.0	7.4	10.5	7.9	13.6	8.4
520	5	17	8.8	7.9	10.5	8.0	12.3	8.1
		33	10.8	8.9	13.3	9.3	16.2	9.6
		50	11.7	9.3	14.7	9.9	18.1	10.4
	6	17	8.3	7.6	9.8	7.8	11.7	7.9
		33	10.0	8.5	12.5	8.9	15.3	9.3
		50	10.9	8.9	13.8	9.5	17.0	10.0
	7	17	7.7	7.3	9.2	7.5	11.1	7.7
		33	9.3	8.2	11.7	8.6	14.4	8.9
		50	10.0	8.5	12.8	9.1	16.1	9.6
	8	17	7.2	7.0	8.7	7.3	10.4	7.4
		33	8.6	7.9	10.9	8.3	13.6	8.6
		50	9.2	8.2	11.9	8.7	15.1	9.2
	9	17	6.7	6.7	8.1	7.0	9.8	7.2
		33	7.9	7.5	10.0	7.9	12.7	8.7
		50	8.4	7.8	10.9	8.3	14.1	8.8
640	5	17	9.6	8.8	11.2	9.0	13.1	9.1
		33	11.9	10.1	14.5	10.5	17.5	10.9
		50	13.0	10.7	16.2	11.2	19.8	11.7
	6	17	9.0	8.5	10.6	8.8	12.5	8.9
		33	11.1	9.8	13.6	10.2	16.6	10.5
		50	12.1	10.3	15.2	10.8	18.8	11.3
	7	17	8.5	8.2	9.9	8.5	11.8	8.6
		33	10.3	9.4	12.8	9.8	15.6	10.1
		50	11.2	9.9	14.2	10.4	17.7	10.9
	8	17	7.9	7.9	9.4	8.2	11.1	8.3
		33	9.6	9.0	11.9	9.4	14.7	9.8
		50	10.3	9.4	13.2	9.9	16.6	10.5
	9	17	7.5	7.5	8.8	7.9	10.5	8.1
		33	8.9	8.6	11.0	9.1	13.7	9.4
		50	9.5	9.0	12.2	9.6	15.5	10.0

TC : TOTAL HEAT CAPACITY (kW)

SHC : SENSIBLE HEAT COOLING CAPACITY (kW)

PERFORMANCE DATA COOLING CAPACITIES

MODEL: 40LM060

AIR QUANTITY (l/s)	ENT CHILLED WATER TEMP (°C)	CHILLED WATER FLOW (L/MIN)	ENT AIR TEMP DB/WB (°C)					
			25.0/17.0		27.0/19.5		29.0/22.0	
			TC	SHC	TC	SHC	TC	SHC
550	5	22	11.0	9.3	13.2	9.6	15.7	9.8
		44	13.1	10.3	16.3	10.9	20.0	11.5
		66	14.0	10.8	17.7	11.5	21.7	12.3
	6	22	10.3	8.9	12.4	9.3	14.9	9.5
		44	12.2	9.9	15.3	10.5	18.9	11.1
		66	13.0	10.3	16.6	11.0	20.6	11.8
	7	22	9.6	8.7	11.6	8.9	14.1	9.2
		44	11.2	9.5	14.3	10.0	17.8	10.6
		66	12.0	9.9	15.5	10.6	19.5	11.3
	8	22	8.9	8.3	10.9	8.6	13.3	8.9
		44	10.3	9.1	13.3	9.6	16.8	10.2
		66	11.0	9.4	14.4	10.1	18.4	10.8
	9	22	8.3	8.0	10.1	8.3	12.5	8.5
		44	9.5	8.7	12.3	9.2	15.7	9.8
		66	10.0	9.0	13.3	9.6	17.2	10.4
600	5	22	11.4	9.8	13.6	10.1	16.2	10.3
		44	13.7	11.0	17.0	11.6	20.8	12.1
		66	14.8	11.5	18.6	12.3	22.8	13.0
	6	22	10.7	9.5	12.8	9.8	15.4	10.0
		44	12.8	10.5	15.9	11.0	19.7	11.7
		66	13.5	10.8	17.5	11.7	21.7	12.5
	7	22	10.0	9.2	12.0	9.4	14.5	9.6
		44	11.8	10.1	14.9	10.7	18.6	11.2
		66	12.7	10.5	16.3	11.2	20.5	11.9
	8	22	9.3	8.8	11.3	9.2	13.7	9.3
		44	10.9	9.7	13.9	10.2	17.5	10.8
		66	11.6	10.0	15.2	10.8	19.3	11.5
	9	22	8.6	8.4	10.5	8.8	12.8	9.0
		44	10.0	9.3	12.9	9.8	16.3	10.3
		66	10.6	9.6	14.0	10.3	18.0	11.0
750	5	22	12.5	11.4	14.8	11.6	17.4	11.7
		44	15.4	12.8	18.9	13.4	23.0	13.9
		66	16.9	13.5	21.0	14.3	25.7	15.0
	6	22	11.8	11.0	14.0	11.2	16.6	11.4
		44	14.3	12.4	17.8	12.9	21.8	13.4
		66	15.7	13.0	19.7	13.7	24.4	14.4
	7	22	11.1	10.6	13.2	10.9	15.7	11.0
		44	13.3	11.9	16.7	12.4	20.5	12.9
		66	14.4	12.4	18.4	13.1	23.0	13.9
	8	22	10.4	10.2	12.4	10.5	14.7	10.7
		44	12.3	11.4	15.5	11.9	19.2	12.4
		66	13.3	11.9	17.1	12.6	21.6	13.3
	9	22	9.7	9.7	11.5	10.2	13.8	10.4
		44	11.4	10.9	14.4	11.5	18.0	12.0
		66	12.2	11.4	15.8	12.1	20.2	12.8

TC : TOTAL HEAT CAPACITY (kW)

SHC : SENSIBLE HEAT COOLING CAPACITY (kW)

PERFORMANCE DATA COOLING CAPACITIES

MODEL: 40LM070

AIR QUANTITY (l/s)	ENT CHILLED WATER TEMP (°C)	CHILLED WATER FLOW (L/MIN)	ENT AIR TEMP DB/WB (°C)					
			25.0/17.0		27.0/19.5		29.0/22.0	
			TC	SHC	TC	SHC	TC	SHC
650	5	26	12.1	10.4	14.7	10.7	17.6	11.0
		52	14.3	11.5	17.9	12.1	22.0	12.7
		78	15.3	11.9	19.4	12.7	23.7	13.4
	6	26	11.4	10.0	13.9	10.3	16.6	10.6
		52	13.4	10.9	16.8	11.6	20.8	12.3
		78	14.2	11.4	18.2	12.2	22.5	13.0
	7	26	10.6	9.6	13.0	10.0	15.7	10.3
		52	12.3	10.5	15.7	11.2	19.6	11.7
		78	13.7	11.4	17.0	11.7	21.3	12.4
	8	26	9.9	9.2	12.1	9.6	14.8	9.9
		52	11.3	10.1	14.6	10.7	18.5	11.3
		78	12.0	10.4	15.7	11.2	20.0	11.9
	9	26	9.1	8.8	11.2	9.3	13.9	9.6
		52	10.3	9.6	13.4	10.2	17.3	10.8
		78	10.9	9.9	14.6	10.7	18.8	11.4
800	5	26	13.4	11.9	16.1	12.2	19.1	12.5
		52	16.1	13.3	20.0	13.9	24.3	14.5
		78	17.3	13.9	21.8	14.7	26.7	15.5
	6	26	12.6	11.5	15.2	11.8	18.1	12.1
		52	15.0	12.8	18.7	13.4	23.0	13.9
		78	16.1	13.3	20.5	14.2	25.3	14.9
	7	26	11.8	11.0	14.2	11.4	17.1	11.7
		52	13.9	12.2	17.4	12.9	21.7	13.5
		78	14.9	12.7	19.1	13.6	23.9	14.3
	8	26	11.0	10.6	13.2	11.0	16.0	11.3
		52	12.8	11.7	16.2	12.4	20.4	13.0
		78	13.6	12.2	17.7	13.0	22.5	13.8
	9	26	10.2	10.1	12.3	10.6	15.0	10.9
		52	11.8	11.2	15.0	11.9	19.0	12.5
		78	12.2	11.6	16.3	12.4	21.0	13.2
1050	5	26	15.0	13.9	17.5	14.2	20.6	14.3
		52	18.3	15.8	22.3	16.3	27.0	16.9
		78	20.0	19.6	24.8	17.4	30.3	18.1
	6	26	14.1	13.4	16.5	13.8	19.5	13.9
		52	17.0	15.2	20.9	15.8	25.5	16.3
		78	18.5	15.9	23.2	16.7	28.7	17.5
	7	26	13.2	12.9	14.6	13.3	18.5	13.5
		52	15.9	14.6	19.6	15.2	24.1	15.7
		78	17.1	15.3	21.6	16.1	27.0	16.8
	8	26	12.4	12.3	14.7	12.9	17.4	13.1
		52	14.7	13.9	18.3	14.6	22.6	15.2
		78	15.7	14.6	20.1	15.5	25.4	16.2
	9	26	11.6	11.6	13.7	12.4	16.3	12.7
		52	13.6	13.3	16.9	14.1	21.1	14.6
		78	14.5	13.9	18.6	14.8	23.7	15.6

TC : TOTAL HEAT CAPACITY (kW)

SHC : SENSIBLE HEAT COOLING CAPACITY (kW)

PERFORMANCE DATA COOLING CAPACITIES

MODEL: 40LM090

AIR QUANTITY (l/s)	ENT CHILLED WATER TEMP (°C)	CHILLED WATER FLOW (L/MIN)	ENT AIR TEMP DB/WB (°C)					
			25.0/17.0		27.0/19.5		29.0/22.0	
			TC	SHC	TC	SHC	TC	SHC
550	5	31	13.5	10.6	16.7	11.2	20.4	11.7
		63	15.3	11.4	19.3	12.3	23.7	13.2
		94	15.9	11.7	20.2	12.7	24.8	13.7
	6	31	12.6	10.2	15.6	10.6	19.3	11.3
		63	14.1	10.9	18.1	11.8	22.5	12.6
		94	14.7	11.2	18.9	12.1	23.6	13.1
	7	31	11.6	9.7	14.7	10.3	18.2	10.8
		63	13.0	10.4	16.9	11.2	21.3	12.1
		94	13.6	10.6	17.8	11.6	22.4	12.5
	8	31	10.7	9.3	13.7	9.8	17.1	10.4
		63	11.9	9.9	15.8	10.7	20.1	11.6
		94	12.4	10.1	16.5	11.0	21.1	12.0
	9	31	9.8	8.9	12.7	9.4	16.0	9.9
		63	10.8	9.4	14.5	10.2	18.8	11.0
		94	11.2	9.5	15.3	10.5	19.9	11.4
750	5	31	15.9	13.1	19.4	13.6	23.3	14.1
		63	18.6	14.4	23.3	15.4	28.6	16.2
		94	19.7	14.9	24.9	16.0	30.6	17.1
	6	31	14.9	12.6	18.3	13.1	22.0	13.6
		63	17.3	13.8	21.9	14.7	27.1	15.6
		94	18.2	14.2	23.4	15.4	29.0	16.4
	7	31	13.8	12.2	17.1	12.6	20.8	13.1
		63	15.9	13.2	20.4	14.1	25.6	15.0
		94	16.8	13.6	21.9	14.7	27.5	15.7
	8	31	12.8	11.7	15.9	12.2	19.5	12.6
		63	14.6	12.6	19.0	13.5	24.1	14.4
		94	15.4	12.9	20.3	14.0	25.8	15.1
	9	31	11.8	11.2	14.8	11.7	18.4	12.2
		63	13.3	12.0	17.5	12.8	22.6	13.7
		94	13.9	12.3	18.7	13.3	24.2	14.4
1100	5	31	19.0	16.8	22.5	17.2	26.5	17.4
		63	22.9	18.8	28.2	19.7	34.5	20.5
		94	24.7	19.7	31.0	20.9	37.9	21.9
	6	31	17.8	16.2	21.2	16.6	25.2	16.9
		63	21.3	18.1	26.5	18.9	32.6	19.8
		94	22.9	18.9	29.1	20.0	35.9	21.1
	7	31	16.7	15.6	19.9	16.1	23.8	16.4
		63	19.8	17.4	24.8	18.2	30.8	19.1
		94	21.2	18.1	29.1	20.0	33.9	20.3
	8	31	15.6	15.0	18.7	15.5	22.4	15.8
		63	18.2	16.6	23.1	17.5	28.9	18.3
		94	19.4	17.3	25.1	18.4	31.8	19.4
	9	31	14.5	14.4	17.4	15.0	21.0	15.3
		63	16.7	15.9	21.4	16.8	26.9	17.6
		94	17.8	16.5	23.2	17.6	29.8	18.7

TC : TOTAL HEAT CAPACITY (kW)

SHC : SENSIBLE HEAT COOLING CAPACITY (kW)

PERFORMANCE DATA COOLING CAPACITIES

MODEL: 40LM100

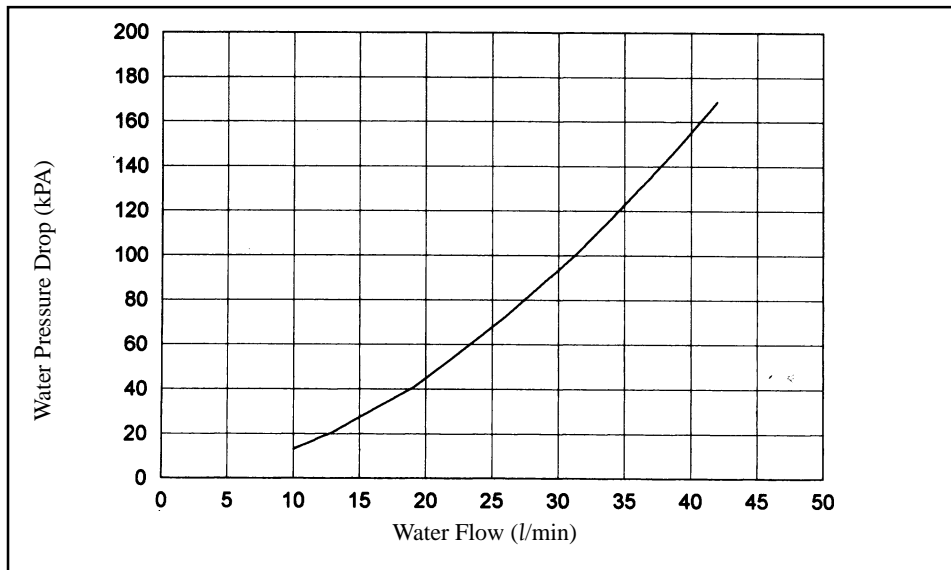
AIR QUANTITY (l/s)	ENT CHILLED WATER TEMP (°C)	CHILLED WATER FLOW (L/MIN)	ENT AIR TEMP DB/WB (°C)					
			25.0/17.0		27.0/19.5		29.0/22.0	
			TC	SHC	TC	SHC	TC	SHC
1000	5	35	17.7	15.6	21.3	16.0	25.2	16.3
		69	21.2	17.3	26.4	18.2	32.2	19.0
		104	22.8	18.0	28.7	19.2	35.2	20.2
	6	35	16.6	15.0	20.0	15.4	23.9	15.7
		69	19.7	16.6	24.7	17.5	30.6	18.3
		104	21.1	17.3	27.0	18.4	33.4	19.4
	7	35	15.5	14.4	18.8	14.9	22.6	15.2
		69	18.3	15.9	23.1	16.8	28.8	17.6
		104	19.5	16.5	25.2	17.6	31.6	18.7
	8	35	14.5	13.8	17.5	14.4	21.3	14.7
		69	16.8	15.2	21.4	16.1	27.1	16.9
		104	17.9	15.8	23.3	16.9	29.7	17.9
	9	35	13.4	13.3	16.3	13.9	19.9	14.3
		69	15.4	14.6	19.8	15.4	25.3	16.3
		104	16.3	15.0	21.5	16.1	27.8	17.2
1300	5	35	19.8	18.2	23.3	18.6	27.3	18.8
		69	24.2	20.5	29.6	21.4	36.1	22.1
		104	26.2	21.5	32.8	22.7	40.1	23.7
	6	35	18.7	17.5	21.9	18.0	25.9	18.2
		69	22.5	19.7	27.7	20.6	34.1	21.4
		104	24.4	20.7	30.8	21.8	37.9	22.8
	7	35	17.5	16.8	20.6	17.5	24.6	17.7
		69	20.8	19.0	25.9	19.8	32.2	20.6
		104	23.3	20.5	28.7	21.0	35.9	22.0
	8	35	16.4	16.2	19.4	16.9	23.2	17.2
		69	19.3	18.2	24.2	19.1	30.2	19.9
		104	20.7	19.0	26.5	20.1	33.7	21.2
	9	35	15.4	15.4	18.1	16.3	21.8	16.6
		69	17.9	17.4	22.4	18.3	28.2	19.1
		104	19.0	18.1	24.5	19.3	31.5	20.3
1500	5	35	20.9	19.7	24.5	20.2	28.5	20.3
		69	25.8	22.5	31.3	23.3	38.0	23.9
		104	28.2	23.7	35.0	24.8	42.7	25.8
	6	35	19.8	19.0	23.0	19.6	27.1	19.7
		69	24.0	21.7	29.4	22.5	36.0	23.2
		104	26.2	22.8	32.8	23.9	40.5	24.9
	7	35	18.6	18.3	21.7	18.9	25.7	19.2
		69	22.4	20.8	27.6	21.6	33.9	22.4
		104	24.3	21.9	30.6	23.0	38.2	24.0
	8	35	17.5	17.5	20.4	18.3	24.2	18.6
		69	20.8	20.0	25.7	20.9	31.8	21.6
		104	22.3	20.9	28.4	22.1	35.9	23.1
	9	35	16.5	16.5	19.3	17.7	22.7	18.1
		69	19.3	19.1	23.9	20.1	29.6	20.8
		104	20.6	19.9	26.2	21.2	33.5	22.2

TC : TOTAL HEAT CAPACITY (kW)

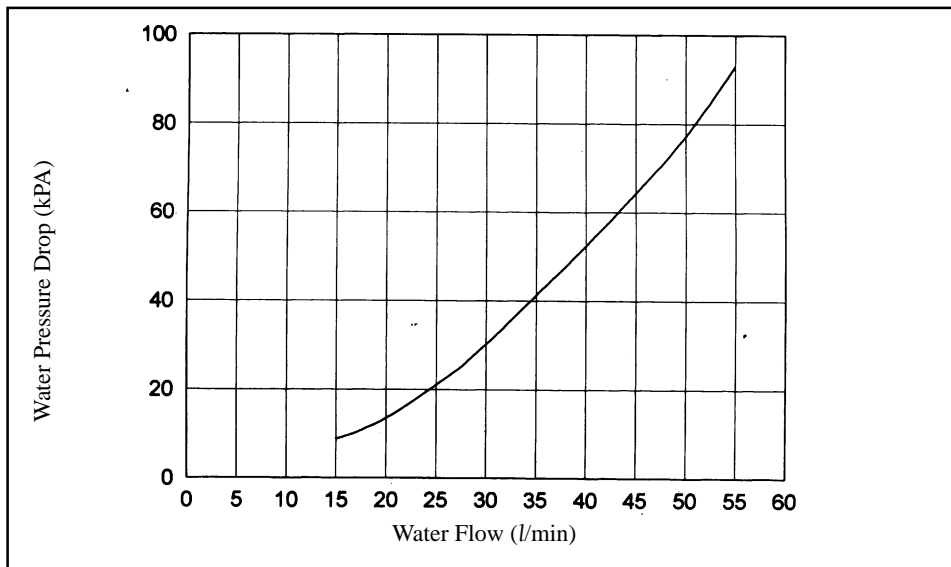
SHC : SENSIBLE HEAT COOLING CAPACITY (kW)

PERFORMANCE DATA COIL PRESSURE DROP

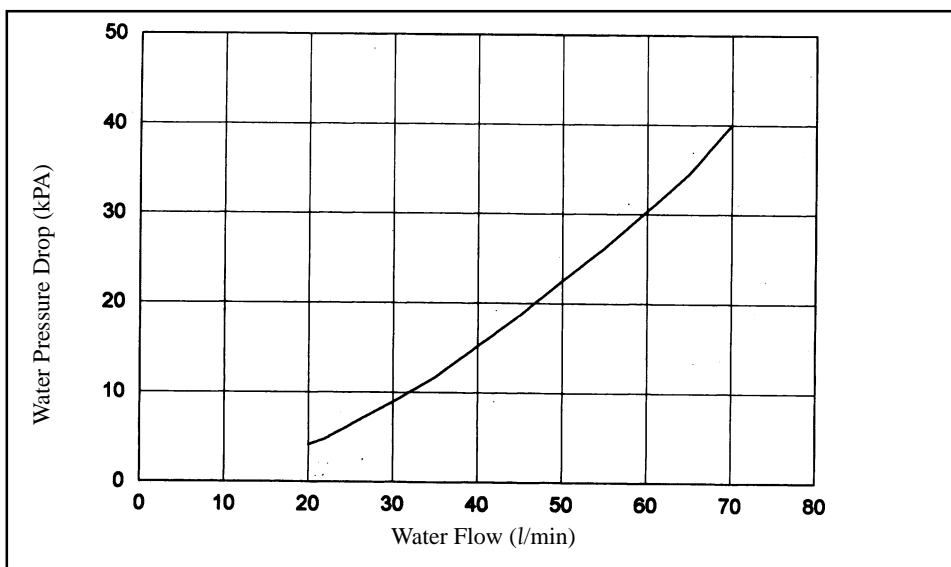
40LM040



40LM050

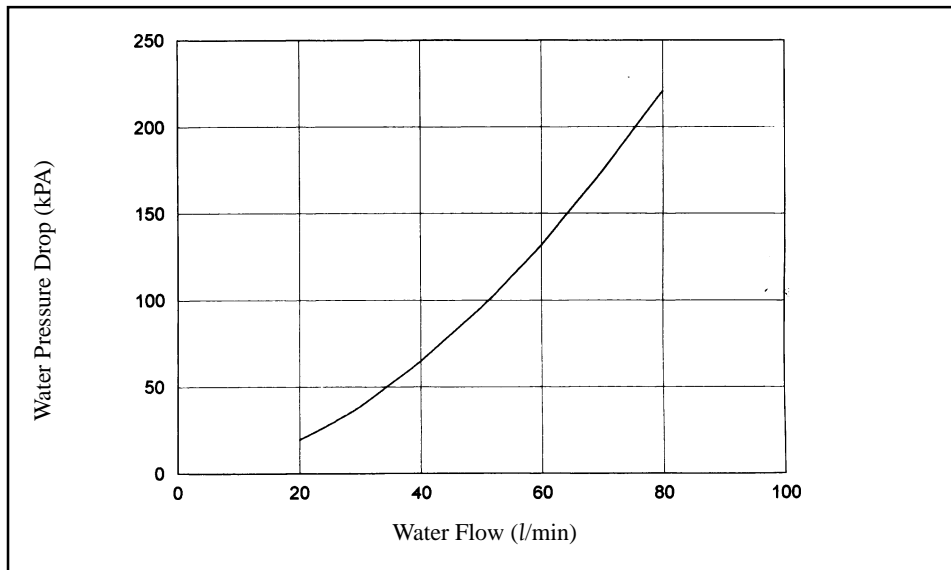


40LM060

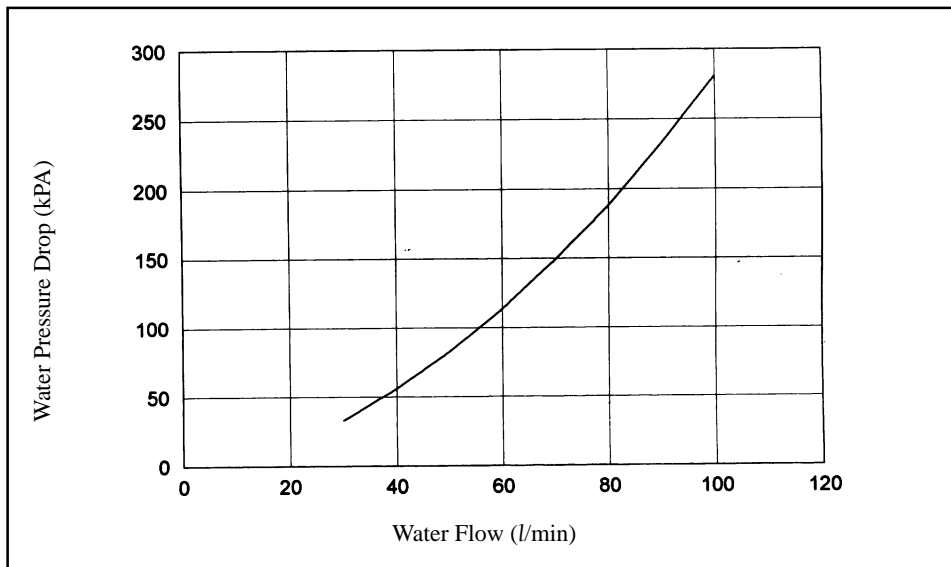


PERFORMANCE DATA COIL PRESSURE DROP

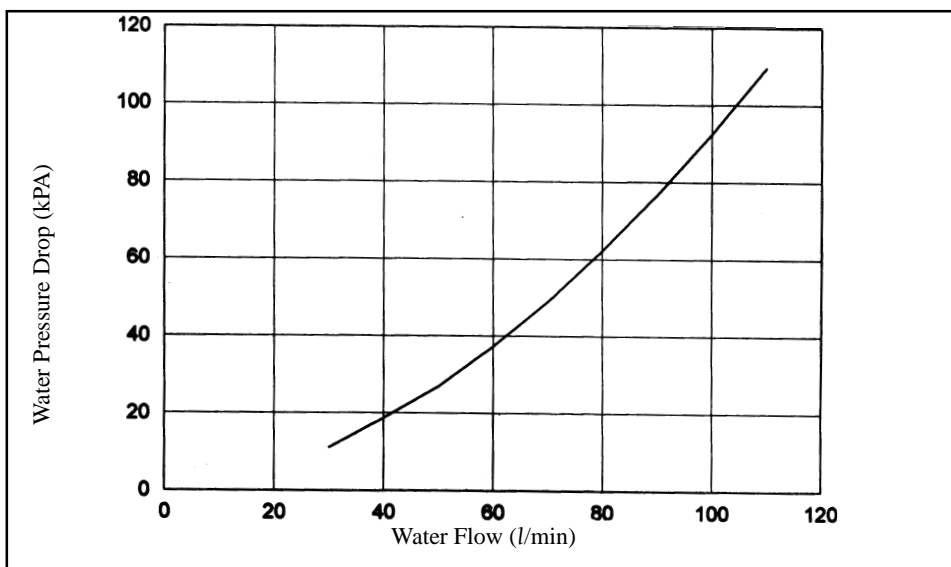
40LM070



40LM090

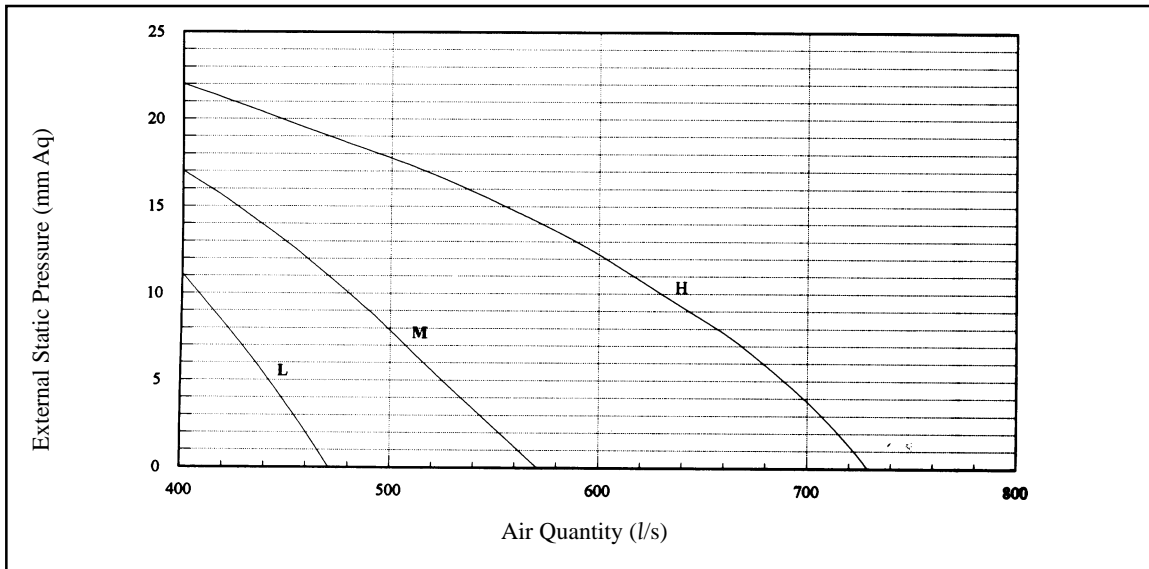


40LM100

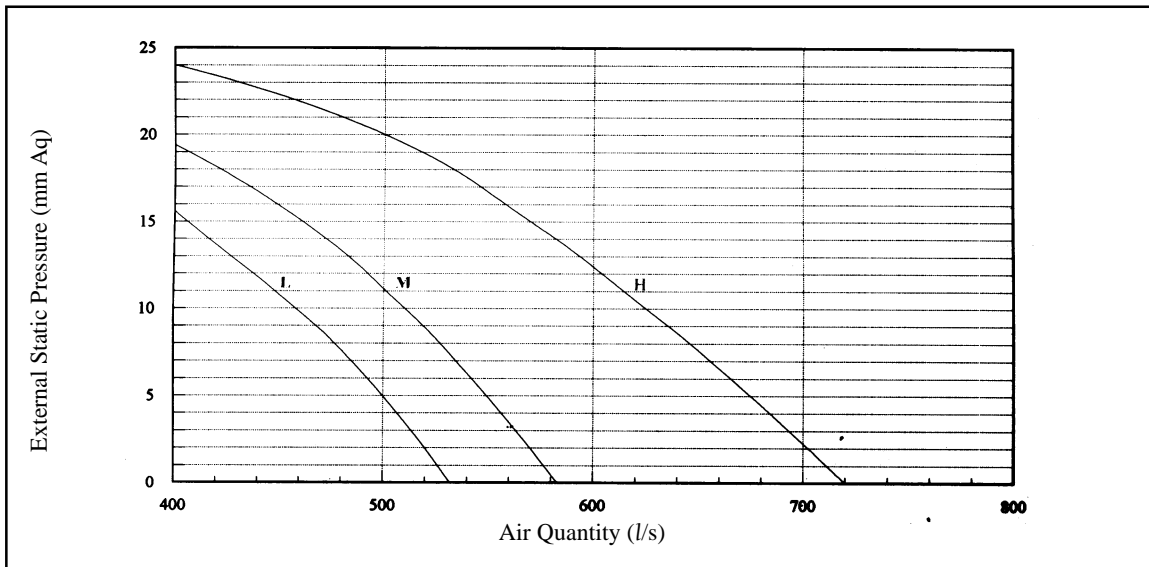


FAN PERFORMANCE

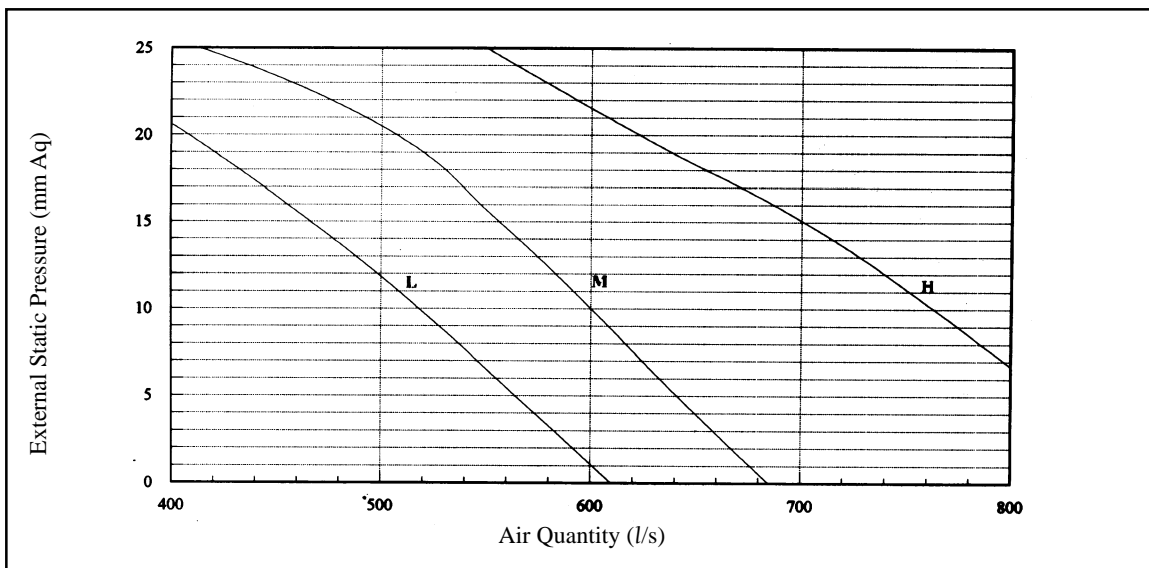
40LM040



40LM050

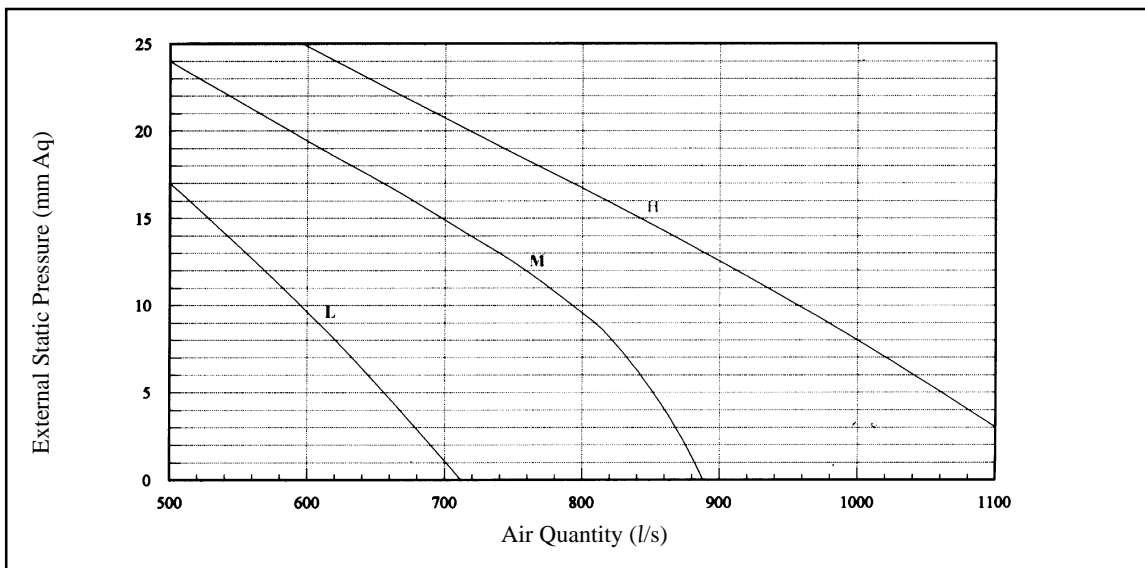


40LM060

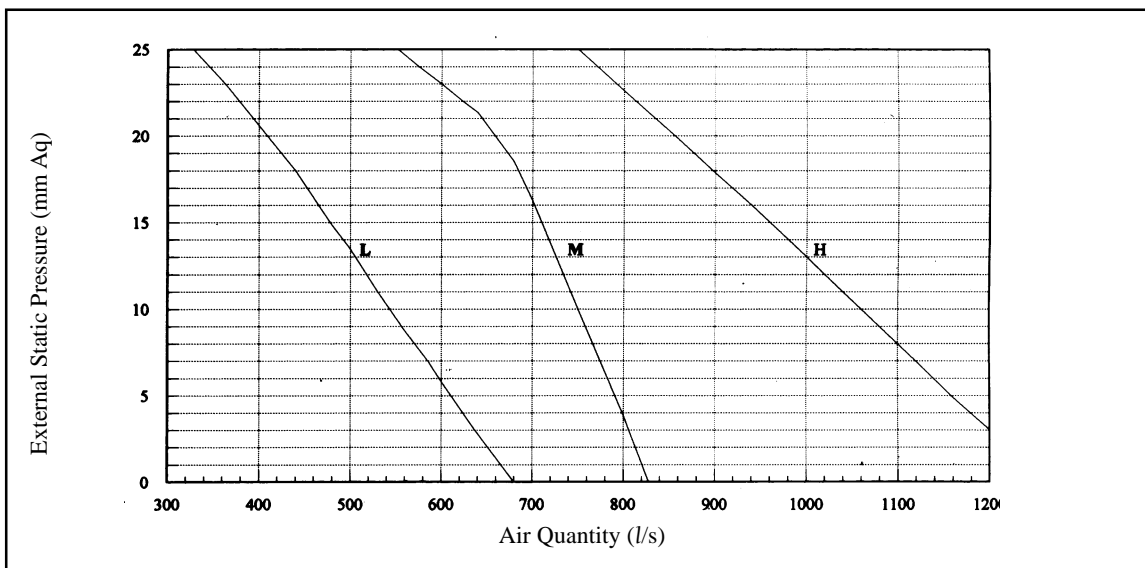


FAN PERFORMANCE (CON'T)

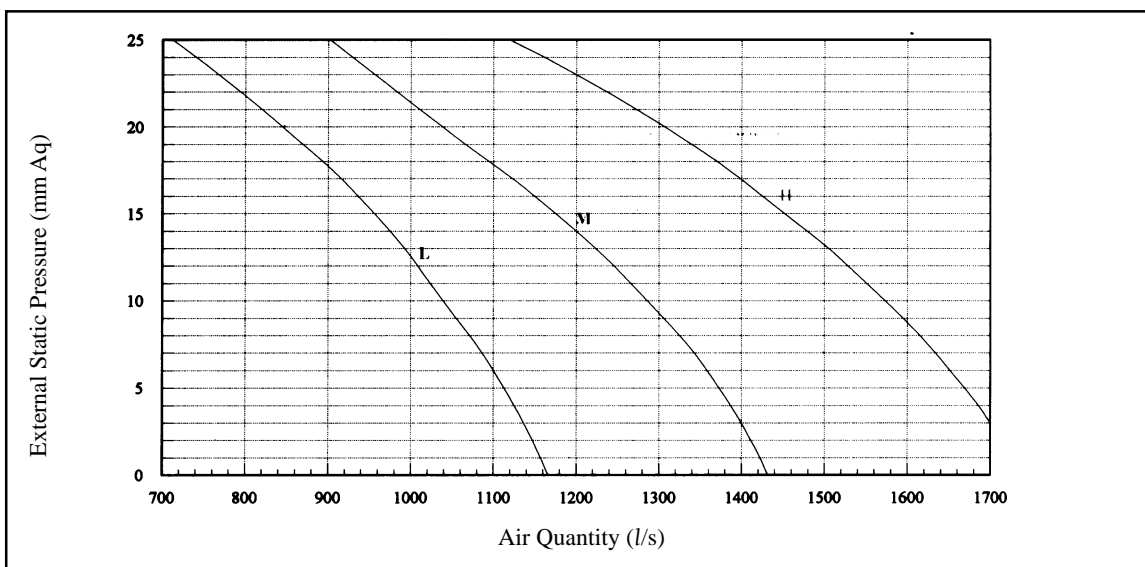
40LM070



40LM090



40LM100



SOUND PRESSURE LEVEL

MODEL		OCTAVE BAND CENTRE FREQUENCY Hz								dB(A)
		63	125	250	500	1000	2000	4000	8000	
40LM040	H	47.1	54.5	57.9	66.4	67.4	67.1	66.2	59.4	71.5
	M	44.3	46.3	50.0	60.3	60.0	58.9	57.2	49.5	65.9
	L	35.8	40.7	43.9	55.9	53.9	53.3	50.3	41.2	60.1
40LM050	H	43.5	51.1	54.2	63.4	64.2	64.1	68.0	56.4	71.0
	M	40.8	42.9	46.6	55.1	55.6	54.5	52.8	45.0	66.2
	L	33.5	38.3	41.8	52.1	50.2	49.7	46.6	37.6	63.2
40LM060	H	48.2	58.7	60.0	58.0	66.8	64.3	63.6	60.8	71.5
	M	45.0	55.0	55.5	53.6	61.6	60.2	59.6	56.5	67.0
	L	39.8	49.0	49.3	49.2	56.6	55.2	53.9	49.7	61.6
40LM070	H	46.8	54.1	56.9	66.0	67.1	66.3	64.5	59.1	72.7
	M	44.9	46.9	49.8	59.0	59.2	57.8	56.9	46.8	67.1
	L	36.8	41.3	44.7	56.5	54.7	53.8	50.2	41.9	60.5
40LM090	H	47.7	54.6	57.9	66.9	67.9	67.5	66.7	60.0	73.4
	M	45.5	47.6	51.3	61.8	61.9	60.8	59.1	51.3	67.6
	L	37.2	42.0	45.1	57.2	55.3	54.8	51.8	42.8	61.7
40LM100	H	48.2	58.0	62.6	66.9	67.5	65.3	63.0	59.8	73.1
	M	44.6	53.2	56.7	62.1	62.2	59.3	56.7	51.0	66.4
	L	40.1	47.2	50.5	56.1	56.5	55.1	50.7	42.8	61.9

Note: Break out sound pressure level at 1.0m in front & 1.0m below the fan discharge of the unit.

GUIDE SPECIFICATIONS

Furnish and install fan coil units in the location and manner shown in IOM. Units shall be suitable for use with 230V-1Ph-50Hz electrical supply.

The base units shall be completed with chilled water coil which equipped with connections for both supply and return line.

Units shall be complete with one or more centrifugal fans, integral-high pitched condensate drain pan and galvanized steel casing panels. It shall be internally insulated on the discharge side of fan with 12.7mm polyethylene.

Coils shall be constructed with lanced sine wave aluminium plate fins mechanically bonded to 3/8" (9.5mm) copper tubing with all joints brazed. Coil shall be 2/3/4 rows deep with a nominal fin spacing of 15FPI.

Fan(s) shall be centrifugal forward curve, direct driven by a permanent split capacitor motor.

Drain pan shall be painted galvanized steel insulated with 6.4mm thick polyethylene foam and pitch for positive drainage with unit level.



Carrier International Sdn. Bhd. (3385-T)

Lot 4, Jalan P/6, Bandar Baru Bangi,
43650, Selangor, Malaysia.

Tel: 03-825 8001

Telex: MA 31610/MA 31614

Fax: 03-825 3578

40LM	NEW
3	97